

285 TechConnect Radio Club

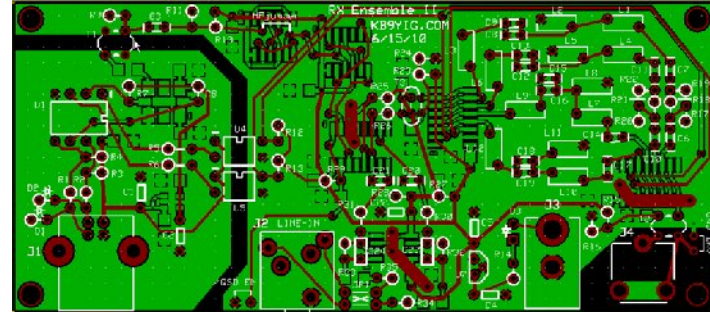
Meeting for 6 August 2011

www.na0tc.org

Ensemble II –Tips and Lessons Learned

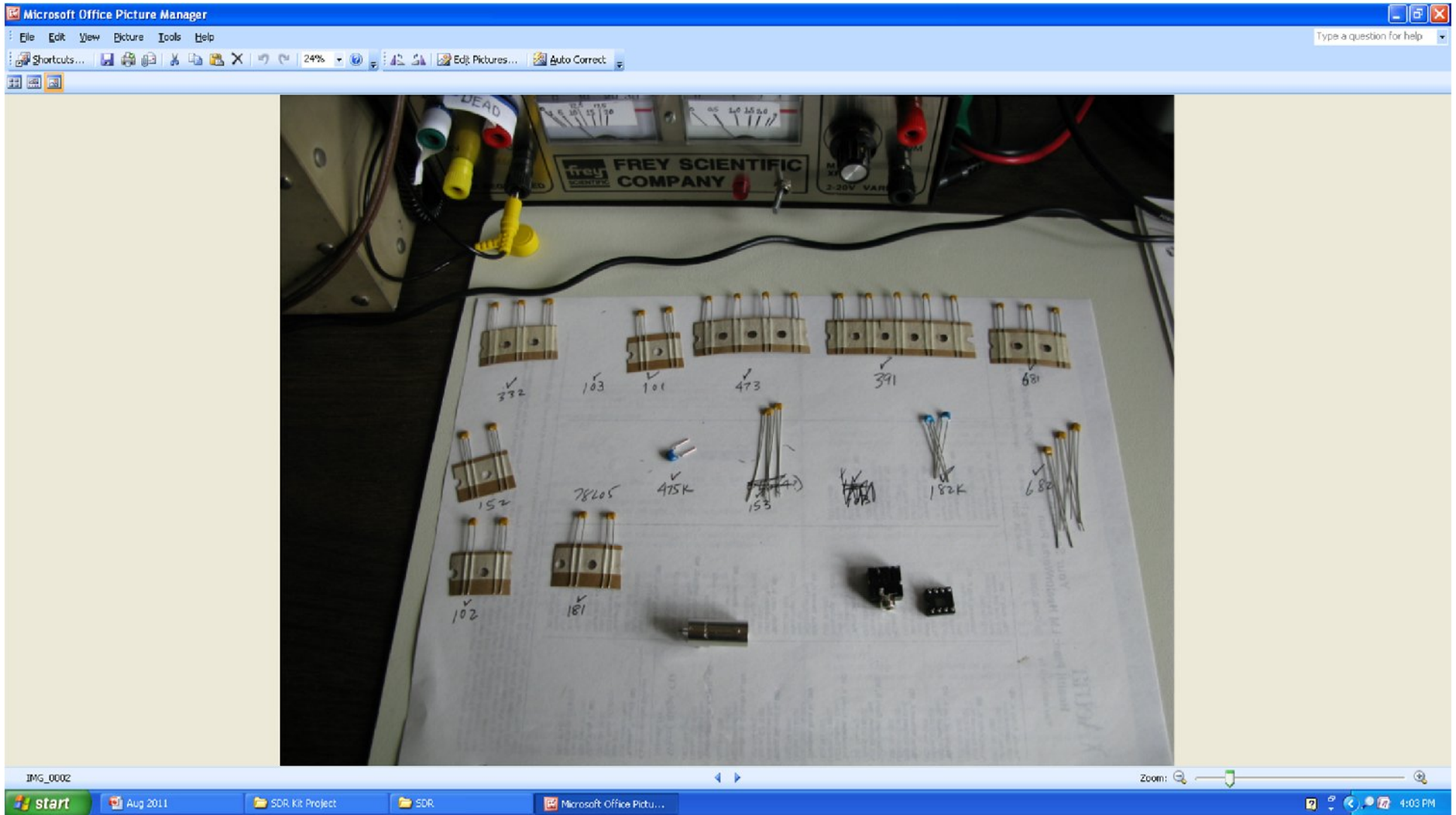
Ensemble II: Tips and Lessons Learned

- Check the Club website
 - Send any tips you have to Nancy for posting
- Observe resistor orientation

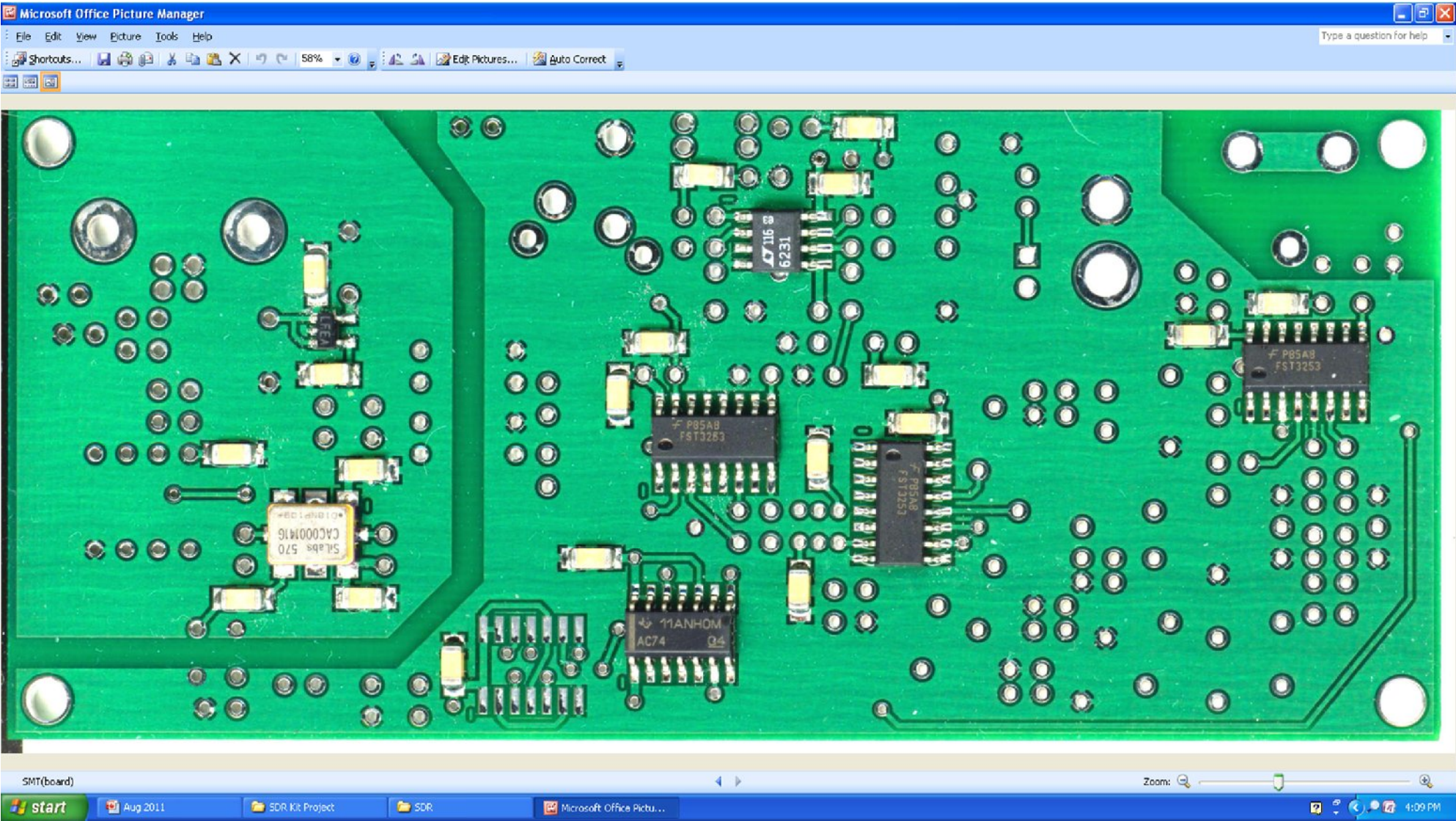


- Use silicone glue to hold transformers (all) in place
- ***Voltage call-out at input to U11:***
 - ***If not correct, complete installation of all parts and check again***
- Software installation very tricky for the “Computer Challenged”
 - First: Install “Amateur Radio Root Certificate”
 - Second: ***Manually*** install USB driver from PE\FKO folder
 - Third: Install CFSGR
 - Forth: Install SDR software (Rocky, HDSDR, etc)

“Bin” the components

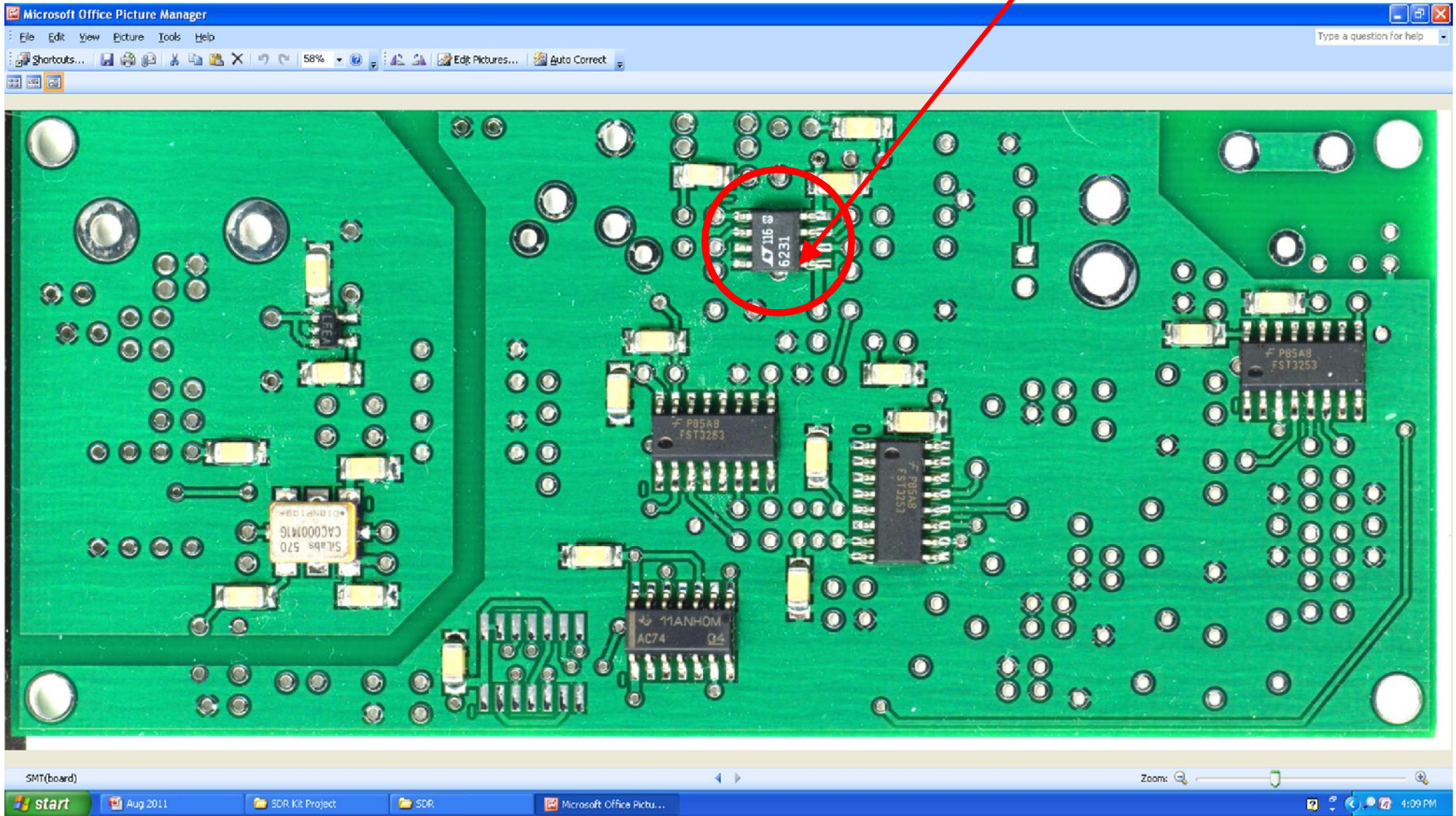


Where is the OOPS?

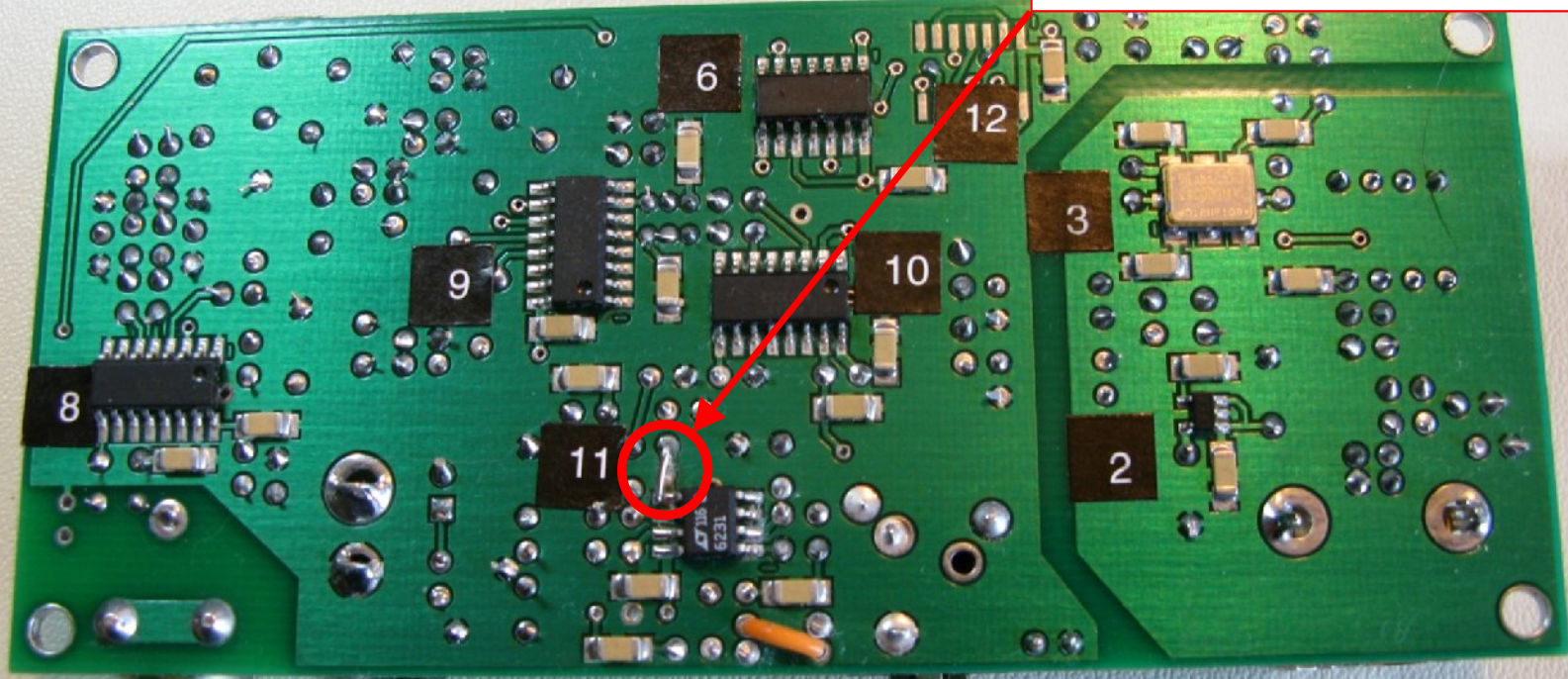


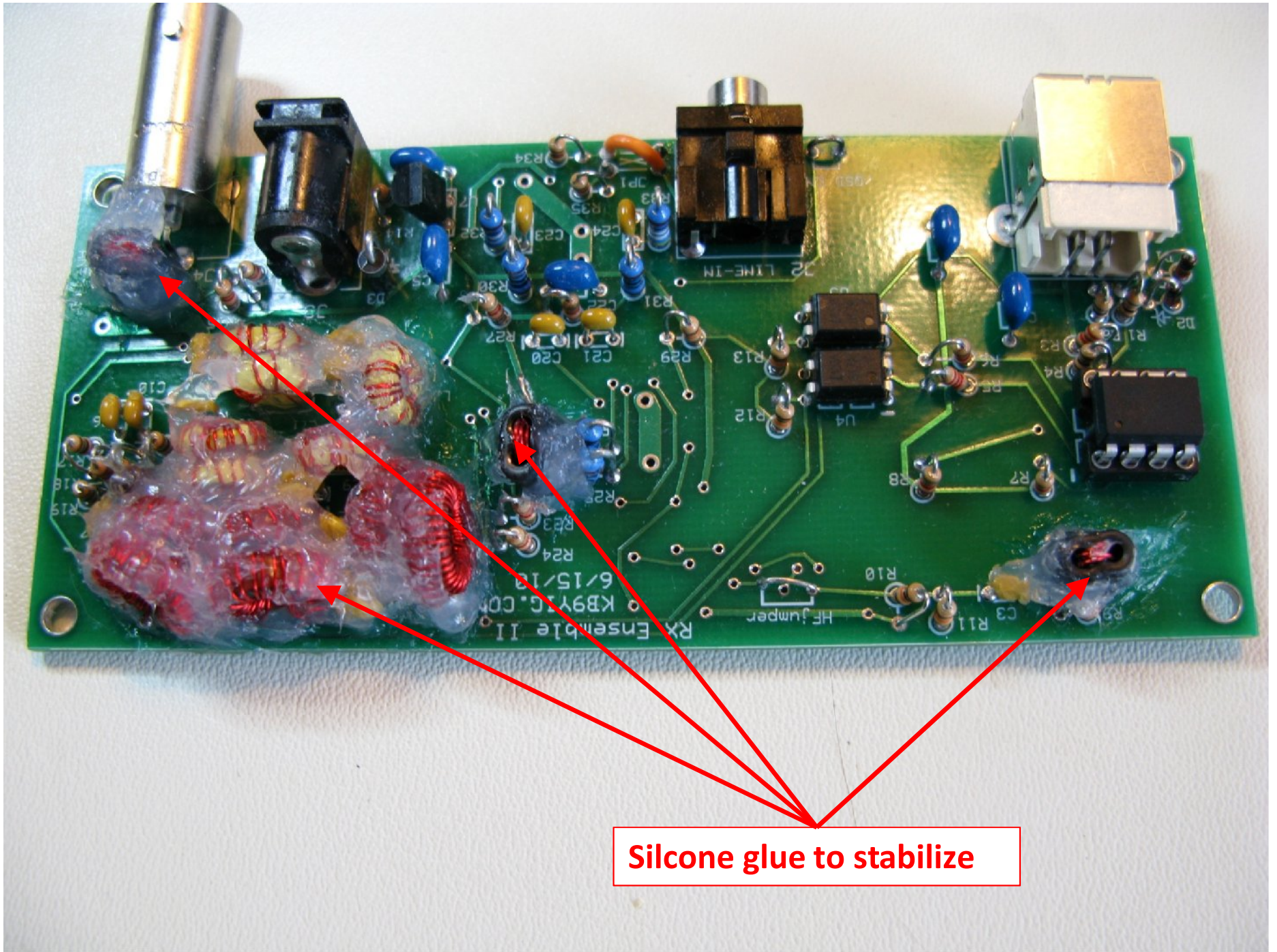
U11 is Backwards

No Pin 1 identifier



Cut trace to troubleshoot





Silicone glue to stabilize